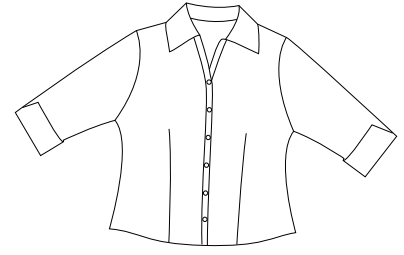


Ladies 3/4 Sleeve Open Neck Blouse

PORT | AUTHORITY®



Front



Back

L629

- * 55/45 cotton/poly * 4.5oz * 3/4 sleeves with fashion cuffs
- * Front and back darts * Dyed-to-match buttons.

Care Instructions:



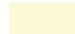


Machine wash cold with like colors.
Do not bleach. Do not dry clean.
Tumble dry low. Remove promptly.
Warm iron if necessary.

Finished Measurements in Inches

Size	XS	S	M	L	XL	XXL	Plus 1X	Plus 2X
Chest	18.75	19.75	21.25	22.75	25	26	27	30
Body	24.5	25.12	25.75	26.37	27	27.37	27.75	28.75
Sleeve	17.75	18	18.25	18.5	18.75	19.25	19.62	19.62

Chest width measured 1" below arm hole. Body length from high point shoulder seam to front hem.
Sleeve length from shoulder seam to hem.

Colors

	Light Blue
	Light Green
	Pale Yellow
	Pale Pink
	White

Please Note:

Colors shown are approximate and for reference only. For closest match see PMS colors, or for exact match, returnable samples and grommeted samples are available.

Color Chart

Colors	Light Blue	Light Green	Pale Yellow	Pale Pink	White
Textile PMS	15-3920TC	12-0312TC	11-0510TC	12-2905TC	11-0601TC
General PMS	283C	358C	607C	670C	No Match